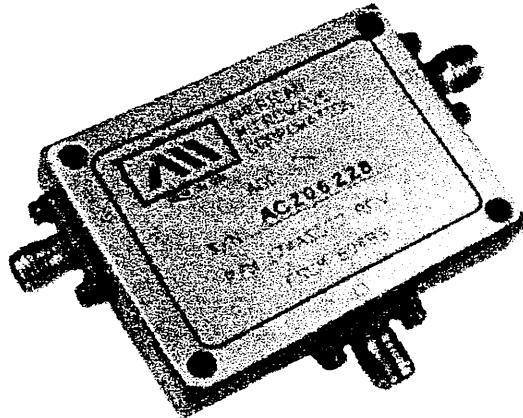


AGC SERIES NON-REFLECTIVE PIN DIODE ATTENUATOR/MODULATOR 1-8 GHz, 30 dB



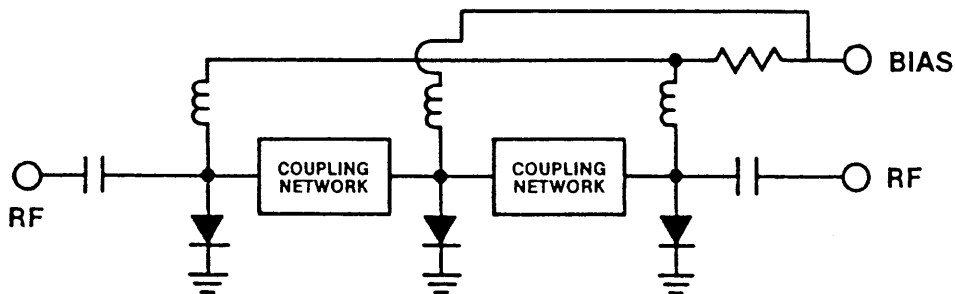
FEATURES

- Low Insertion Loss
- Solid State Reliability
- Absorptive Type

DESCRIPTION

The AGC Series are fast pin diode modulators that are current controlled and operate in a non-reflective mode at all attenuation levels. The units are available in octave bandwidths from 1 to 8 GHz. Units feature a unique coupling between diodes that eliminates the use of hybrids and allows for lower loss, higher reliability units in a small package size.

FUNCTIONAL SCHEMATIC



REVISED
OCTOBER 9, 1997

6/85

SPECIFICATIONS

MODEL	FREQUENCY RANGE (GHz)	INSERTION LOSS, MAX.(dB)	VSWR MAX.	MAX. ATTEN.(dB)	FLATNESS' (dB)
AGC-1020	1-2	0.8	1.8:1	30	±1
AGC-1530	1.5-3	0.8	1.8:1	30	±1
AGC-2040	2-4	1.1	1.8:1	30	±1
AGC-2550	2.5-5	1.2	1.8:1	30	±1
AGC-3060	3-6	1.3	2.0:1	25	±1.5
AGC-4080	4-8	1.7	2.0:1	25	±1.5

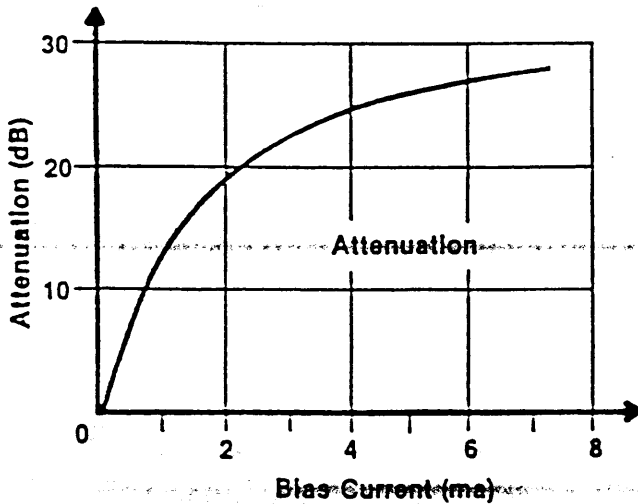
NOTES:

1. Flatness at 10dB attenuation
2. Minimum attenuation at 0 bias
3. Maximum attenuation is at 15 ma
4. Maximum input level +30dBm
5. +25dBm intercept point at -20dBm input level
6. SMA connectors, input and output
7. Bias connector SMC male
8. Temperature Range: +10° to 70° C

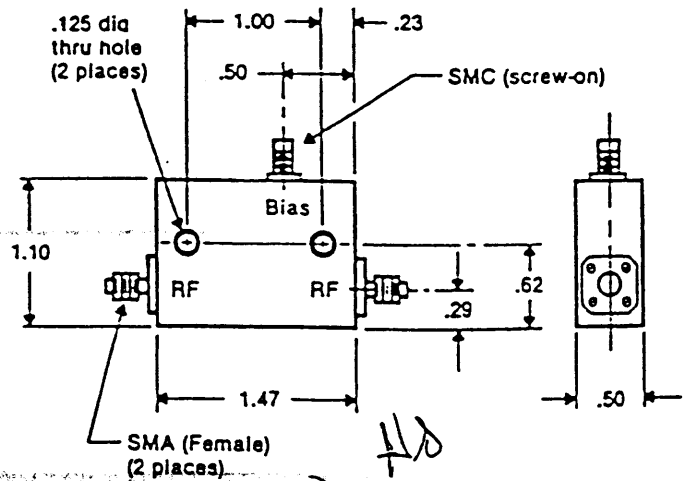
AVAILABLE OPTIONS

- 001- ONE MALE, ONE FEMALE RF CONNECTOR
- 002- TWO MALE RF CONNECTORS
- 003- SMA FEMALE BIAS CONNECTOR

TYPICAL PERFORMANCE



MECHANICAL DATA



REVISED
OCTOBER 9, 1997

Handwritten notes:
R.A. WP
B6 M
EK
H/B